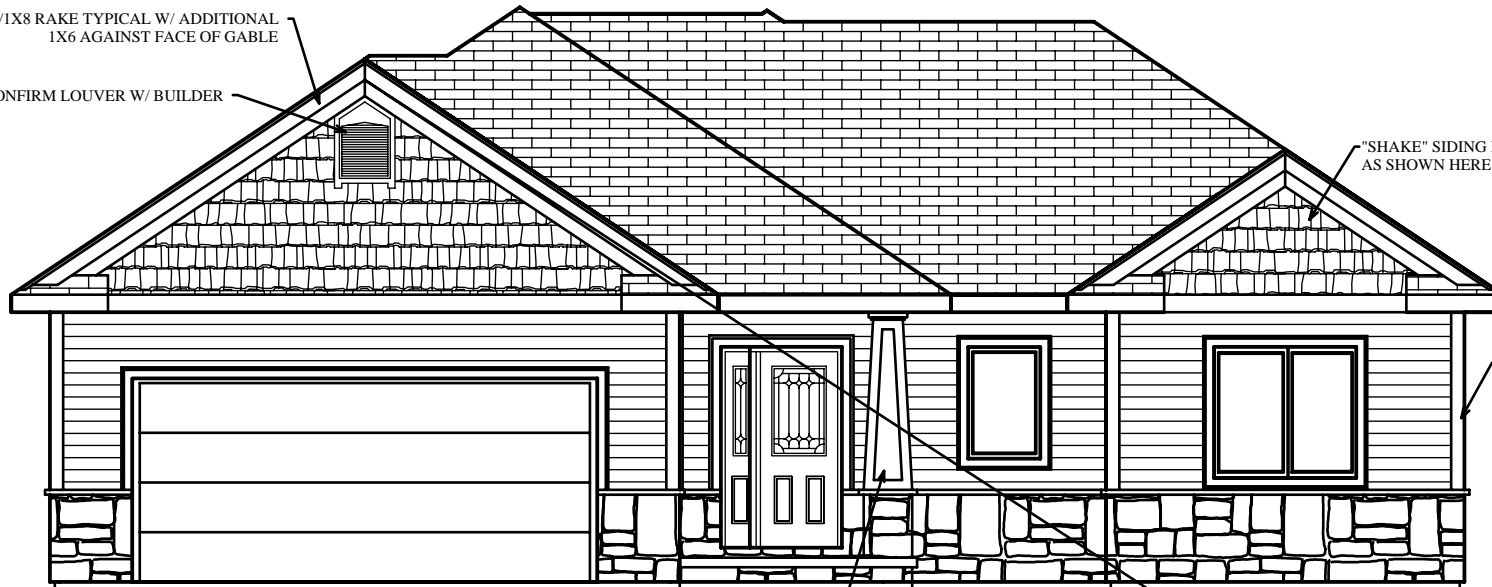


1X2/1X8 RAKE TYPICAL W/ ADDITIONAL  
1X6 AGAINST FACE OF GABLE

CONFIRM LOUVER W/ BUILDER

"SHAKE" SIDING IN GABLES  
AS SHOWN HERE



◆ LINE OF MAIN LEVEL DBL. TOP-PLATE (+10'-3 1/4")

5/4X6 TRIM ON CORNERS

9'-1 1/8"

◆ LINE OF MAIN LEVEL SUB-FLOOR (+1'-2 1/8")

◆ TOP OF FOUNDATION / BASEMENT POURED WALL (0'-0")

4'-0"

◆ TOP OF FROST FOOTING (-4'-0")

9'-0"

◆ TOP OF POURED WALL FOOTING (-9'-0")

JOB BUILT  
COLUMN  
TO BE CONFIRMED

# FRONT ELEVATION